

# CERTIFICATE



GLAMOUR  
HIGH GLOSS FLOORING

marble/stone

ABRASION CLASS

**AC3**

EXAMPLE OF APPLICATION

Hallway

LENGTH: 644 mm

WIDTH 310mm

THICKNESS: 8mm

CE  
EN 14041  
2006



Manufacture and product control are in accordance with DIN norm EN 13329. The right to technical modifications is reserved.



*G. Thielecke*

Mr. Gunnar Thielecke  
Supervisor  
Technical Quality Management



*M. Prager*

Mr. Martin Prager  
Managing Director

Kronotex GmbH & Co. KG  
Wittstocker Chaussee 1 · D-16909 Heiligengrabe  
[www.kronotex.com](http://www.kronotex.com)

Made in Germany



# CERTIFICATE



**GLAMOUR**  
HIGH GLOSS FLOORING

## wood grain

ABRASION CLASS

**AC3**

EXAMPLE OF APPLICATION

Hallway

LENGTH: 1376 mm    WIDTH: 193 mm    THICKNESS: 8 mm



Manufacture and product control are in accordance with DIN norm EN 13329. The right to technical modifications is reserved.



*J. Thielecke*

Mr. Gunnar Thielecke  
Supervisor  
Technical Quality Management



*M. Prager*

Mr. Martin Prager  
Managing Director

Kronotex GmbH & Co. KG  
Wittstocker Chaussee 1 · D-16909 Heiligengrabe  
[www.kronotex.com](http://www.kronotex.com)

Made in Germany

# CERTIFICATE



**GLAMOUR**  
HIGH GLOSS FLOORING

gloss art

ABRASION CLASS

**AC3**

EXAMPLE OF APPLICATION

Hallway

LENGTH: 644 mm    WIDTH: 310 mm    THICKNESS: 8 mm



Manufacture and product control are in accordance with DIN norm EN 13329. The right to technical modifications is reserved.



*J. Thielecke*

Mr. Gunnar Thielecke  
Supervisor  
Technical Quality Management



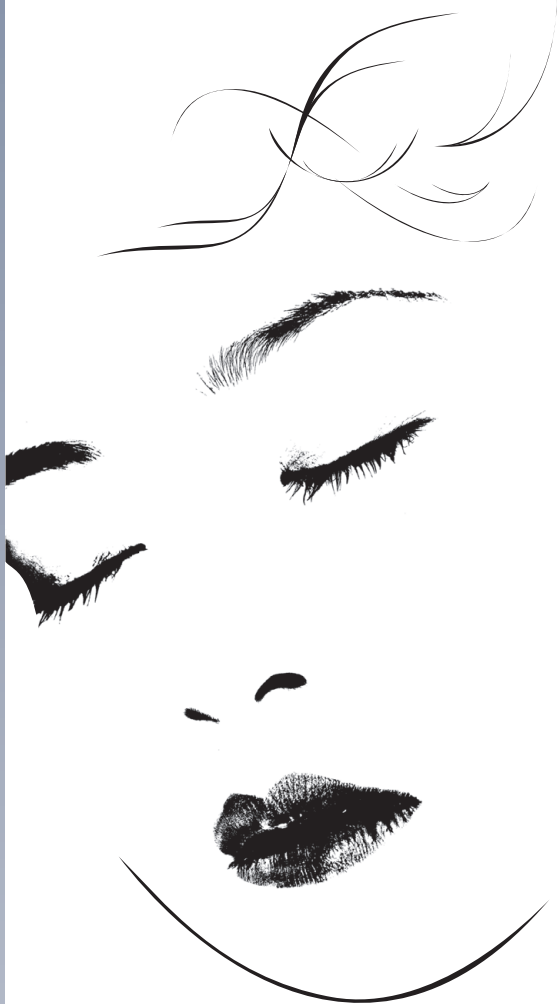
*M. Prager*

Mr. Martin Prager  
Managing Director

Kronotex GmbH & Co. KG  
Wittstocker Chaussee 1 · D-16909 Heiligengrabe  
[www.kronotex.com](http://www.kronotex.com)

Made in Germany

# CERTIFICATE



## DESIGN COLLECTION

USE CLASS PER EN 685

**32**

ABRASION CLASS

**AC4**

EXAMPLE OF APPLICATION

Hotels



COMMERCIAL 32

LENGTH: 1380 mm WIDTH: 193 mm THICKNESS: 8 mm

**GUARANTEE**  
**12 years** | **3 years**  
*private* | *commercial*



Manufacture and product control are in accordance with DIN norm EN 13329. The right to technical modifications is reserved.



*J. Thielecke*

Mr. Gunnar Thielecke  
Supervisor  
Technical Quality Management



*M. Prager*

Mr. Martin Prager  
Managing Director

Kronotex GmbH & Co. KG  
Wittstocker Chaussee 1 · D-16909 Heiligengrabe  
www.kronotex.com

Made in Germany



# CERTIFICATE



USE CLASS PER EN 685

**32**

ABRASION CLASS

**AC4**

EXAMPLE OF APPLICATION

Hotels



COMMERCIAL32

GUARANTEE

LENGTH: 1376 mm WIDTH: 113 mm THICKNESS: 10 mm

**12 years** | **3 years**  
private | commercial



Manufacture and product control are in accordance with DIN norm EN 13329. The right to technical modifications is reserved.



*J. Thielecke*

Mr. Gunnar Thielecke  
Supervisor  
Technical Quality Management



*M. Prager*

Mr. Martin Prager  
Managing Director

Kronotex GmbH & Co. KG  
Wittstocker Chaussee 1 · D-16909 Heiligengrabe  
www.kronotex.com

Made in Germany